

The Brain and Intelligent Machines

Understanding How Our Brains Inspire AI

Explore the fascinating intersection of neuroscience and artificial intelligence.



OPTIMISE AI

How Our Brains Inspire AI

1 Efficiency

Brain's unparalleled processing power inspires AI design.

2 Adaptability

AI mimics brain's ability to learn and adapt.

3 Blueprint

Brain structure guides development of AI technologies.



What is Intelligence?

Human Intelligence

Acquiring knowledge through learning and problem-solving.

Artificial Intelligence

Using algorithms and machine learning to mimic human intelligence.



From Early AI to Today

1

1950s

Early AI models use rules-based approaches.

2

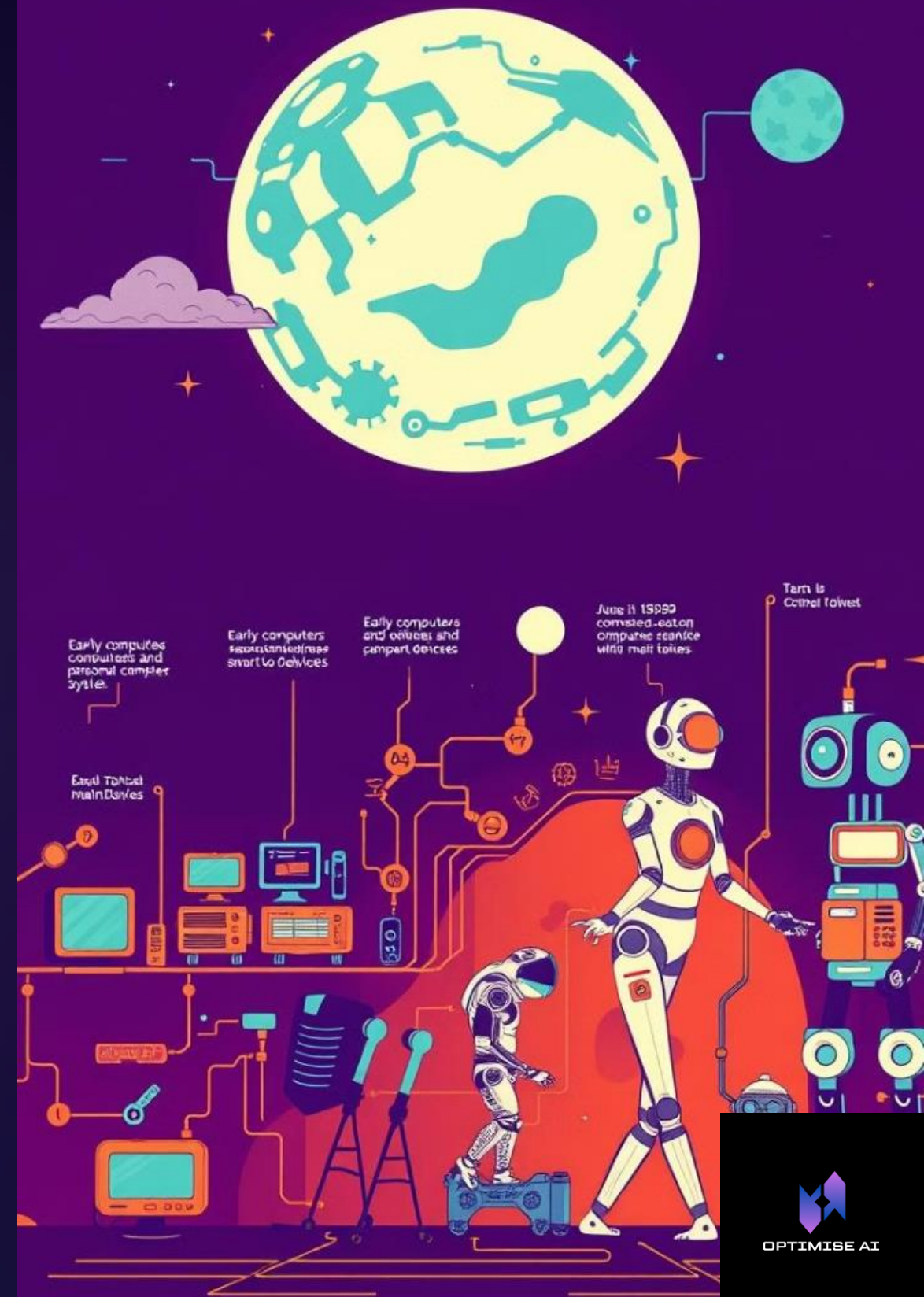
1980s

Neural networks gain prominence in AI research.

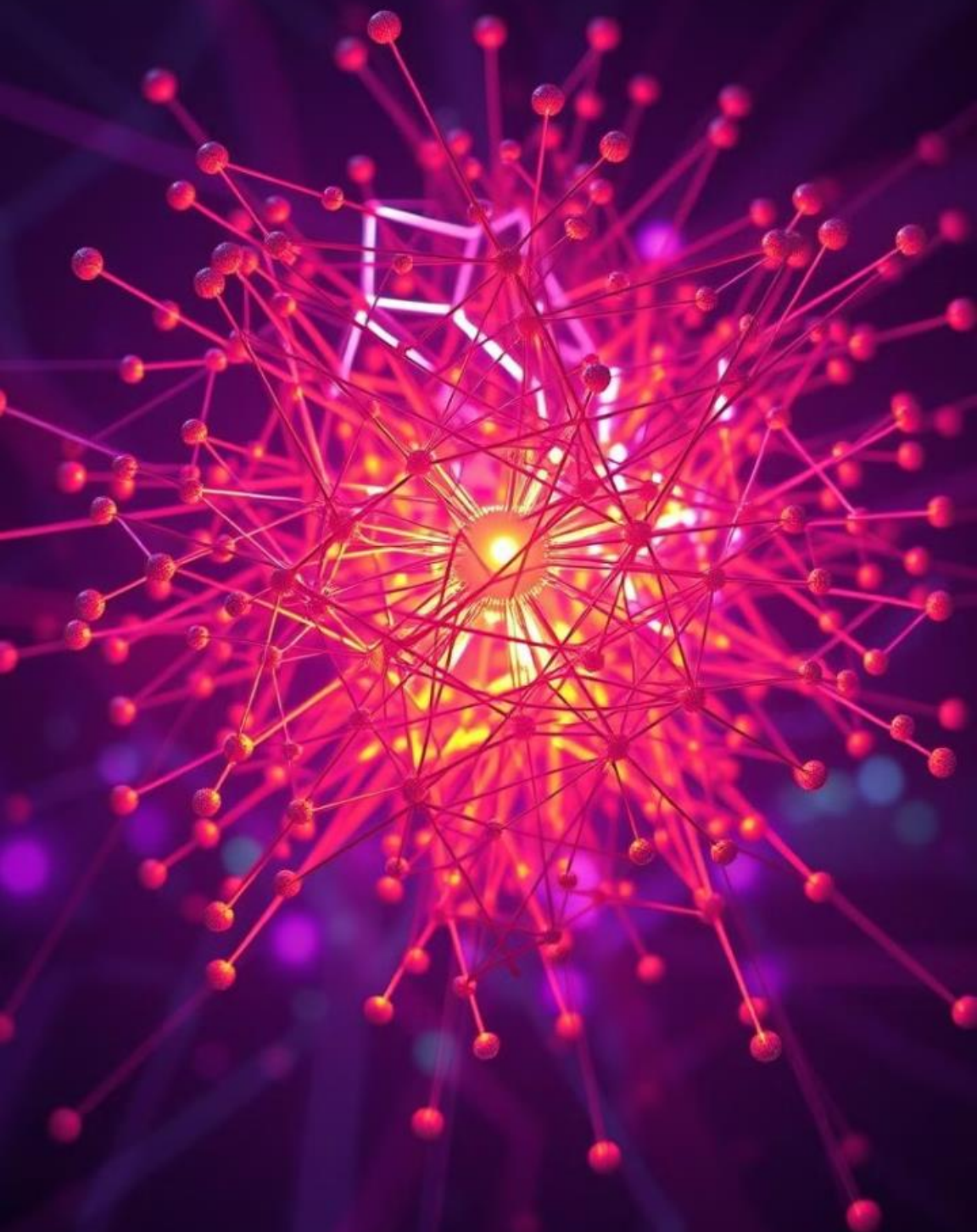
3

2000s

Deep learning revolutionises AI capabilities.



The Brain as a Blueprint



1

Input

Sensory information enters the network.

2

Processing

Information processed through multiple layers.

3

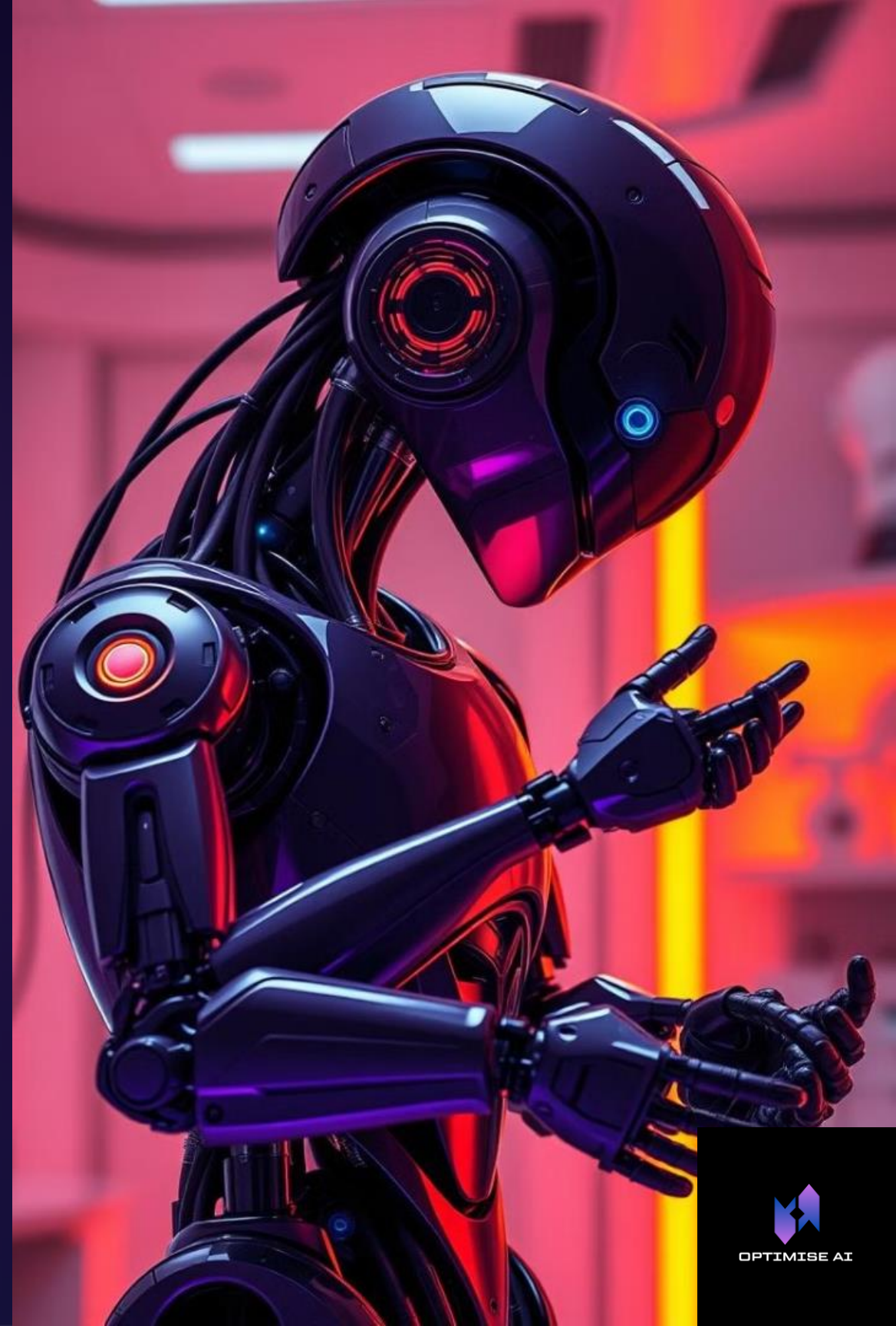
Output

Network produces complex problem-solving results.



Robots Powered by Intelligence

Precision	High
Perception	Limited
Learning	Improving
Environmental Interaction	Developing



Brain-Computer Interfaces (BCIs)

Direct Control

Enables thought-based device operation.

Medical Breakthroughs

Offers hope for paralysis treatment.

Enhanced Capabilities

Potential to augment human cognitive abilities.





The Ethics of AI and Brain-Machine Merging



Privacy

Protecting personal data and thoughts.



Responsibility

Determining accountability for AI actions.



Identity

Redefining what it means to be human.

What Lies Ahead for AI?



Smart Cities

AI optimising urban environments for efficiency and sustainability.



Healthcare Revolution

AI-driven personalised medicine and advanced diagnostics.



Human-AI Collaboration

Synergy between human creativity and AI processing power.



OPTIMISE AI



Embracing AI's Potential

1 Continuous Evolution

AI progresses towards more human-like capabilities.

2 Ethical Considerations

Balancing innovation with responsible development.

3 Transformative Power

AI's potential to revolutionise various aspects of life.

